

RHEEM ELECTRIC STORAGE HOT WATER



1-9
PEOPLE

20-400
LITRE
DELIVERY

MAINS
PRESSURE

7 or 10
YEAR
WARRANTY^{1,2}



MAINS PRESSURE HOT WATER

COMES ON STEADY, HOT AND STRONG

INSTALL A



RHEEM ELECTRIC STORAGE HOT WATER

RHEEM IS AUSTRALIA'S FAVOURITE NAME IN HOT WATER AND THE NAME AUSTRALIANS HAVE TRUSTED FOR GENERATIONS

YOU'LL BE RIGHT WITH RHEEM

No.1 with Australian families. Rheem is Australia's favourite hot water system... and it's been that way since 1939, when Rheem started making water heaters in Australia. Generations of Australian families have relied on Rheem for water that is steady, hot and strong!

RHEEM IS EVERYWHERE

There is an unequalled network of experienced Rheem service agents across the country. No matter where you are in Australia there is expert advice available to ensure that you get the Rheem solution that is right for you.

WE HAVE THE RIGHT RHEEM FOR YOU

Rheem has the most extensive range of hot water systems available in Australia. Solar, gas or electric storage. Continuous flow or heat pump. Energy efficient. Rheem has a range of capacities and sizes just right for every situation.

Solar, gas or electric.
Continuous flow, heat pump,
or storage. Rheem has
a range of hot water solutions
for every situation.



THINGS TO CONSIDER WHEN SELECTING AN ELECTRIC WATER HEATER

Purchase/installation costs

If you are replacing an existing water heater a "like for like" replacement tends to minimise installation costs.

Running costs

These will be based on your household usage and the tariff rate for your household. For example, whether you are on off-peak or reduced tariff electricity, will determine the rate for running costs.

Choosing the right size or capacity

When choosing the right sized water heater for your household you will need to consider how you use the hot water, for example:

- How many bathrooms are in your home or how many people use hot water at the same time?
- How many adults and children live at home?
- As they can use a lot of hot water, how many of the children are teenagers?
- Is there a dishwasher connected to the hot water supply?
- Do you wash your clothes all, some or none of the time in hot water?
- Do you have a larger than normal bathtub or spa-tub that is filled using the hot water supply?

RHEEM OPTIMA® ELECTRIC

Rheem Optima® electric storage water heaters offer the peace of mind that comes with a 10 year warranty² and are ideal for use with money-saving off-peak energy tariffs. Rheem Optima® also features a thermostat that is user adjustable up to 75°C, for even greater hot water availability.

Rheem Optima® is backed by Rheem's extensive service network and over 70 years of water heating know-how.

Model (Litres)	250	315	400
PPH* – Off peak tariff Single / Twin	1-3/2-3	2-4/3-4	4-6/4-7
PPH* – Continuous tariff Single / Twin	3-5	4-6	5-9

* PPH – People per household

- Mains Pressure at multiple taps
- 10 year Warranty²
- Available in 250L, 315L & 400L capacities
- Designed for economical Off-peak energy tariffs
- Twin element daytime boost models available
- User adjustable thermostat



RHEEMGLAS® ELECTRIC

Rheemglas® is an economical electric storage water heater range that is available in different capacities to suit most needs while the larger models (160 Litre and larger) are ideal for use with money-saving off peak energy tariffs. Rheemglas® provides years of trouble-free hot water.

Model (Litres) single element	25	50	80	125
PPH* – Off peak tariff	-	-	-	-
PPH* – Continuous tariff	-	1	1-2	2-3
Model (Litres) single element	160	250	315	400
PPH* – Off peak tariff	-	1-3	2-4	4-6
PPH* – Continuous tariff	2-4	3-5	4-6	5-9
Model (Litres) twin element	160	250	315	400
PPH* – Off peak tariff	1-3	2-3	3-4	4-7
PPH* – Continuous tariff	2-4	3-5	4-6	5-9

* PPH – People per household

- Mains Pressure at multiple taps
- 7 year Warranty¹
- Available in 25L, 50L, 80L, 125L, 160L, 250L, 315L & 400L capacities
- Off-peak tariff models available
- Twin element daytime boost models available
- Adjustable thermostat models available



RHEEMPLUS ELECTRIC

RheemPlus models feature a maximum 50°C temperature delivery so there is no need for an additional tempering valve to be installed.

It also features 7 year warranty¹ and is available in a range of capacities to suit most needs.

- Mains Pressure at multiple taps
- 50°C Max Temperature Delivery³
- Single Element
- Left hand connection
- Available in 125L, 160L, 250L & 315L capacities

PRODUCT DATA

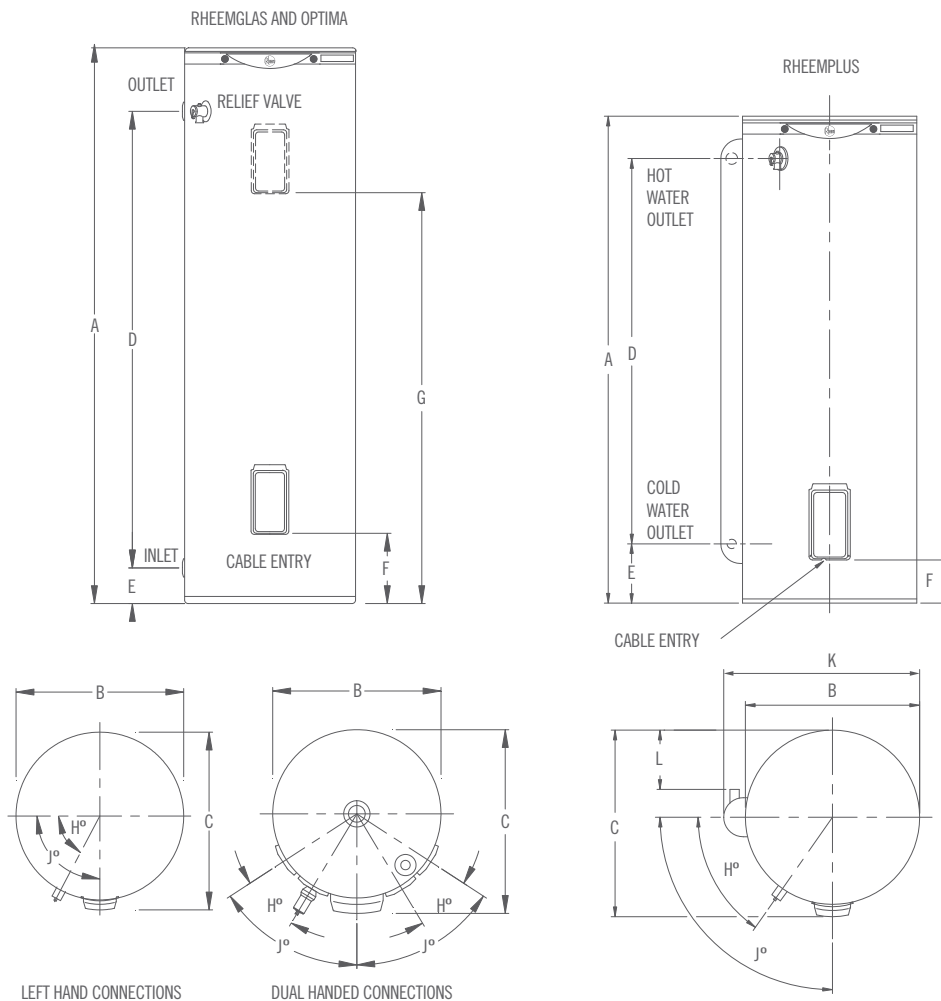
		Warranty	Model							
Rheemglas® Single Element		7 years	111025	191050	111080	111125	111160	111250	111315	111400
Rheemglas® Twin Element		7 years	-	-	-	-	162160	162250	162315	162400
Rheem Optima® Single Element		10 years	-	-	-	-	-	411250	411315	411400
Rheem Optima® Twin Element		10 years	-	-	-	-	-	462250	462315	462400
RheemPlus Single Element		7 years	-	-	-	121125	121160	121250	121315	
Hot Water Delivery		Litres	20	50	80	125	160	250	315	400
Storage Capacity		Litres	25	53	90	135	165	270	324	412
Boost Capacity Twin Element			-	-	-	-	45	50	50	90
Dimensions										
	A	mm	390	695	940	1340	1610	1395	1640	1840
	B	mm	385	393	480	480	480	640	640	690
	C	mm	420	429	515	515	515	700	700	755
	D	mm	130	397	702	1102	1332	1117	1317	1479
	E	mm	116	142	64	64	104	73	113	121
	F	mm	75	80	84	84	84	128	128	129
	G	mm	-	-	-	-	1085	1005	1255	1346
	H	deg	26	26	23	23	23	32	32	30
	J	deg	65	59	58	58	58	88	88	83
	K	mm	-	-	-	545	545	705	705	-
	L	mm	-	-	-	183	183	262	262	-
Approx. Weight Empty		Kg	18	23	34	49	57	74	89	112

111, 411, 162, 462 and 121 models have left hand connections.

191 models have left and right hand connections and are available in 050 Litre delivery capacity only.

Rheemglas single element models with right hand connections only are available in 80 and 125 Litre delivery capacities and have a 171 prefix.

Technical data is subject to change.



GLOSSARY OF TERMS

Off-Peak Electricity – is a lower running cost option that is available to you to use electricity to heat your water overnight during low demand, 'off peak' times. Once heated, the water is then stored in your insulated tank for use during the day. Off-peak electricity is only available for storage hot water systems with a 160 Litre capacity or greater, depending on your local electricity supplier (125 Litre capacity for South Australia).

Continuous Electricity – is where power is available to heat the water 24 hours per day. A smaller tank can often be used but the running costs will be higher.

PPH – People Per Household.

Terms and Conditions

- Warranty: 7 year cylinder warranty, 3 years labour warranty on the cylinder, 1 year parts and labour warranty on all other components for domestic (non-commercial) installations. 7 year warranty applies to product manufactured after 1/1/2012. Conditions apply. See the Rheem warranty set out in the Owner's Guide & Installation Instructions or view it at www.rheem.com.au/warranty.
- Warranty: 10 year cylinder warranty, 5 year labour warranty on the cylinder, 1 year parts and labour warranty on all other components for domestic (non-commercial) installations. Conditions apply. See the Rheem warranty set out in the Owner's Guide & Installation Instructions or view it at www.rheem.com.au/warranty.
- 50°C factory pre-set models supply hot water at a maximum 50°C at all outlets in accordance with AS 3498. Some applications may require tempering, refer to AS/NZS 3500-4.

© Registered Trademark of Rheem Australia Pty Ltd. TM Trademark of Rheem Australia Pty Ltd. Rheem Australia Pty Ltd, 1 Alan St, Rydalmere, NSW 2116 Australia. Materials and product data are subject to change without notice.